



Better sound quality.
Better features.
Better price.

JA **AUDIO**™

Speakers to Fit Every Need and Every Lifestyle.

I30CM



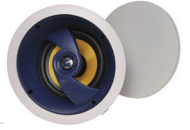
Rated Power: 40 W
Impedance: 8 Ohms
SPL (1W/1M): 89dB
Max SPL@1M: 105dB
Product Size: DIA 205x85mm
Frequency Range: 80Hz-20KHz
Installation: In ceiling
Enclosure Material: ABS
Color: White
Weight: 1.3kg
Speaker: 1" x 1 (TREBLE), 5" x 1 (BASS)

I100CM



Woofers: 8" Polypropylene Cone with Butyl Rubber Surround
Tweeter: 1" Pivoting Silk Dome, Ferrofluid Cooled
Crossover: 6dB/Octave
Frequency Response: 40Hz-20kHz
Impedance: 8 Ohms
Sensitivity (1W/1M): 90dB
Power Handling: 100W
Outer Dimension: Dia 271mm
Cutout Dimension: Dia 238mm
Mounting Depth: 89mm

EX-206C



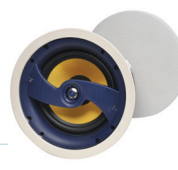
Power Handling: 5-100
Mounting: Cam-Lock
Grille: White Aluminum
Frequency: 55 Hz - 22,000 Hz
Dimensions: 9 1/8" DIA x 5 1/4" DPT
Install Dimensions: 8 3/8" DIA
Cone Type and Size: 6.5" Yellow Fiberglass Cone with a Rubber Surround
Crossover: Hi-End 18 dB, Adjustable for Tweeter Level ±3 dB
Angel Degree: 20
Tweeter: 1" Titanium Dome Swivel
Efficiency: 89 db
Impedance: 8 Ωnominal, 6 Ωminimum
Speaker Bracket: SPKBKT-6C
Warranty: Intrasonic 10 Year

JA-C8AI



Power Handling: 10-150
Mounting: Cam-Lock
Grille: White Aluminum
Frequency: 42 Hz - 22,000 Hz
Overall Dimensions: 11" DIA x 3 1/2" DPT
Install Dimensions: 9 1/2" DIA
Cone Type and Size: 8" Aluminum Cone with a Rubber Surround
Crossover: 18 dB High - Low pass
Adjustable Crossover: Tweeter 0/-3 dB
Tweeter: 1" Aluminum Dome Swivel with Ferrofluid Cooled Voice Coil
Efficiency: 91 db
Impedance: 8 Ωnominal, 6 Ωminimum
Speaker Bracket: SPKBKT-8C
Warranty: Intrasonic 10 Year

EX-C80II



Power Handling: 45-150
Mounting: Cam-Lock
Grille: White Aluminum
Frequency: 40 Hz - 20 kHz ±3 dB
Overall Dimensions: 10 3/4" DIA x 5 1/4" DPT
Install Dimensions: 9 1/2" DIA
Cone Type and Size: 8" Yellow Fiberglass Cone with Rubber Surround
Crossover: Hi-End 12 dB, Adjustable for Tweeter & Woofer
Tweeter: 1" Titanium Dome Swivel
Woofer: 8" Yellow Fiberglass Cone with Ferrofluid Cooled Voice Coil
Db Sensitivity: 88 db
Impedance: 8 Ωnominal, 6 Ωminimum
Speaker Bracket: SPKBKT-8C
Warranty: Intrasonic 10 Year

I100W



Power Handling: 100
Mounting: Cam-Lock
Grille: White Metal
Frequency: 36 Hz - 22 kHz
Dimensions: 10" W x 14 1/4" H x 3 1/2" DPT
Install Dimensions: 8 7/8" W x 12 7/8" H
Tweeter Type and Size: 360° directional Laminated Alum PP1
Magnet Weight: 13.3 oz
Cone Type and Size: 8" Laminated PP
Db Sensitivity: 89 db
Impedance: 8 Ωnominal
Bass and Treble: 3 Position Adjustable
Speaker Bracket: SPKBKT-8IW
Warranty: Intrasonic 10 Year

JA-SS7



Power Handling: 80 (120 Watts Max)
Frequency: 55 Hz - 600 Hz
Overall Dimensions: 9 7/8" W x 13" H x 14" DPT
Cone Type and Size: 6" x 9" Long-Throw Woofer to Reproduce Low Frequency's
Bass Booster: 20 Hz + 5 dB
Frequency: 18 dB High - Low Pass Auto power input
Signal Level: 5 mv
Impedance: 8 Ωnominal
Warranty: Intrasonic 2 Year

JA-T5



Power Handling: 20-120
Mounting: Bracket
Frequency: 50 Hz - 22,000 Hz
Color: White
Dimensions: 7 1/8" W x 9 1/8" H x 6 9/17" DPT
Cone Type and Size: 5 1/4" Polypropylene with a Rubber Surround
Tweeter: 5/8" liquid-cooled polycarbonate
Sensitivity: 89 dB 1W/1M
Impedance: 8 Ωminimum
Warranty: Intrasonic 2 Year

JA-B3II



Power Handling: 100 (35 Watts Continuous)
Mounting: Adjustable Swivel Bracket Included
Frequency: 250 Hz - 18 kHz
Color: White or Black
Dimensions: 3 1/4" W X 7" H x 4 3/4" DPT
Sensitivity: 91 dB/Wm
Impedance: 6 Ωminimum
Warranty: Intrasonic 10 Year

JA-BT-VC



Stereo Wireless Volume Control
30 Watts
Bluetooth: 3.0+EDR stereo module
 High efficiency 30Wx2 class D amplifier
Frequency range: 20-20k Hz
Stereo inputs: 3.5mm
Bluetooth® Technology
Approx. 30' Distance

B3-HTPACK



5.1 Mini-Cube Surround Sound
Includes:
 (5) Each JA-B3 Mini Cubes
 (1) JA-SS10 Subwoofer
 (1) I51W Home Theater Wall Plate
Colors: White or Black Mini-Cubes

JA-VNB-75



Power Handling: 75 RMS/150 Max
Attenuation: 34-0 dB in 12 position
Frequency: 35 Hz - 20 kHz
Color: White
Overall Dimensions: 14 1/8" x 10 1/8" x 4"
Warranty: Intrasonic 2 Year

EX-R6T



Power Handling: 5-100
Mounting: Cam-Lock
Grille: White Aluminum
Frequency: 52 Hz - 22,000 Hz
Overall Dimensions: 11" DIA x 6" DPT
Install Dimensions: 9 1/4" DIA
Cone Type and Size: Pivoting 6.5" Yellow Fiberglass Cone with a Rubber Surround
Crossover: Hi-End 12 dB, Adjustable for Tweeter & Woofer Level ± 3 dB
Tweeter: Pivoting 1" Titanium Dome Swivel
Efficiency: 88 db
Impedance: 8 Ω nominal, 6 Ω minimum
Speaker Bracket: SPKBKT-8C
Warranty: Intrasonic 10 Year

JA-I8AII



Power Handling: 100
Mounting: Cam-Lock
Grille: White Metal
Frequency: 36 Hz - 22 kHz
Dimensions: 10" W x 14 1/4" H x 3 1/2" DPT
Install Dimensions: 8 7/8" W x 12 7/8" H
Tweeter Type and Size: 360° directional Laminated Alum PP1
Magnet Weight: 13.3 oz
Cone Type and Size: 8" Laminated PP
Db Sensitivity: 89 db
Impedance: 8 Ω nominal
Bass and Treble: 3 Position Adjustable
Speaker Bracket: SPKBKT-8IW
Warranty: Intrasonic 10 Year

JA-I6AII



Power Handling: 10-100
Mounting: Cam-Lock
Grille: White Metal
Frequency: 50 Hz - 22,000 Hz
Dimensions: 8 3/4" W x 12 1/16" H x 3 1/4" DPT
Install Dimensions: 7 1/4" W x 10 1/16" H
Cone Type and Size: 6 1/2" Aluminum Cone with a Rubber Surround
Crossover: 24 dB High - Low pass
Tweeter: 1" Aluminum Dome Swivel With Ferrofluid Cooled Voice
Coil Efficiency: 90 db
Impedance: 8 Ω nominal, 6 Ω minimum
Speaker Bracket: SPKBKT-6IW
Warranty: Intrasonic 10 Year

JA-CC5AII



Power Handling: 10-100
Mounting: Cam-Lock
Grille: White Aluminum
Frequency: 70 Hz - 22,000 Hz
Dimensions: 17 3/4" L x 8 3/4" H x 3" DPT
Install Dimensions: 16 3/8" L x 7 3/8" H
Cone Type and Size: (2) 5 1/4" Aluminum Cone with a Rubber Surround
Crossover: 18 dB High - Low Pass
Adjustable Crossover: Tweeter 0/-3 dB
Tweeter: 3/4" Aluminum Dome Tweeter with Ferrofluid Cooled Voice Coil
Efficiency: 89 db
Impedance: 8 Ω nominal
Speaker Bracket: N/A
Warranty: Intrasonic 10 Year

JA-D6AII



Power Handling: 10-100 Watts
Mounting: Cam-Lock
Grille: White Aluminum
Frequency: 55 Hz - 22,000 Hz ± 3 dB
Color: White
Overall Dimensions: 9 1/2" DIA x 3 1/8" DPT
Install Dimensions: 8" DIA
Cone Type and Size: Dual voice coil in-ceiling speaker, 6 1/2" Aluminum Cone with a Rubber Surround
Crossover: 24 dB
Tweeter: (2) 3/4" Aluminum Dome Swivel Tweeter with Ferro fluid Cooled Voice Coil
Db Sensitivity: 90 db
Impedance: 8 Ω nominal, 6 Ω minimum
Speaker Bracket: SPKBKT-8C
Warranty: Intrasonic 10 Year

EX-I65II



Power Handling: 5-100 Watts
Mounting: Cam-Lock
Grille: White Aluminum
Frequency: 50 Hz - 22,000 Hz ± 3 dB
Dimensions: 12" W x 8 1/16" H x 3 11/16" DPT
Install Dimensions: 7 1/4" W x 10 3/4" H
Cone Type and Size: 6 1/2" yellow Fiberglass Cone with a Rubber Surround
Crossover: Hi-End 18 dB, Adjustable for Tweeter & Woofer Level \pm dB
Tweeter: 1" Titanium Dome Eyeball Swivel Tweeter with Cooled Voice Coil
Efficiency: 90 db
Impedance: 8 Ω nominal, 6 Ω minimum
Speaker Bracket: SPKBKT-6IW
Warranty: Intrasonic 10 Year

JA-PED 4W



4" 2 Way Pendant Speaker
80 Watts
Tweeter: 13mm Mylar
Woofer: Polypropylene woofer with rubber surround
Crossover: Hi-6db
Transformer: 100V /8 Ω /20W/10W/5W
Impedence: 8 Ω
Weight: 1.9KG

JA-PED 6B



6.5" 2 Way Pendant Speaker
100 Watt
Tweeter: 13mm Mylar
Woofer: Polypropylene woofer with rubber surround
Crossover: Hi-6db
Transformer: 100V /8 Ω /20W/10W/5W
Impedence: 8 Ω
Weight: 2.9KG

JA-70V-C



8" Dual Cone 70V Ceiling Loudspeaker
 Suitable for any 70V/25V Paging System
 Dual Cone
 70V/ 5W 2.5W 1W 0.5W 0.25W
 25V/ 5W 2.5W 1W 0.5W 0.25W
Resonant Frequency: 110Hz $\pm 15\%$
Dimensions: 12 7/8" x 2 3/4"
Impedance: 8 Ω $\pm 15\%$ @ LOW-Z

JA-VSL-100



Power Handling: 100 RMS/180 Max
Attenuation: 34-0 dB in 12 position
Frequency: 35 Hz - 20 kHz
Color: White
Warranty: Intrasonic 2 Year

JA-RK6-GY



6.5" Gray Rock Speaker
100 Watt
Tweeter: 13mm Mylar
Woofer: 6.5" PP Cone W/Rubber Edge
Crossover: Hi-6db
Impedence: 8 Ω
Weight: 2.8KG

ROCK-RK820



Power Handling: 250
Frequency: 100 Hz - 22 kHz 3 dB
Color: Red
Cone Type and Size: 8" Black Polypropylene Cone
Tweeter: 2" Polypropylene
Impedance: 8 Ω nominal, 6 Ω minimum
Warranty: Intrasonic 2 Year

JA-SS10



Power Handling: 120 (200 Watts Max)
Frequency: 50 Hz - 400 Hz
Dimensions: 14 1/2" W x 15 H x 14 1/2" DPT
Cone Type and Size: 10" Long-Throw Woofer to Reproduce Low Frequency's
Bass Booster: 20 Hz + 5 dB
Frequency: 50 Hz-400 Hz Auto power input
Signal Level: 5 mv
Impedance: 8 Ω nominal
Warranty: Intrasonic 2 Year

I30W



Power Handling: 30
Mounting: Cam-Lock
Grille: White Metal
Frequency: 48 Hz - 20 kHz
Dimensions: 8 3/4" W x 12" H x 2 1/2" DPT
Install Dimensions: 7 3/8" W x 10 3/4" H
Tweeter Type and Size: Mylar 1/2"
Magnet Weight: 10 oz
Cone Type and Size: 6 1/2" Coated Paper
Db Sensitivity: 88 db
Impedance: 8 Ω nominal
Speaker Bracket: SPKBKT-61W
Warranty: Intrasonic 10 Year

WS-KIT



2.4G Wireless Speaker System
Includes: Transmitter, Transformer, Receiver - additional receivers are available (WS-KIT02)

Learn more today!

Contact your JA Audio representative shown below, or for more information, visit www.intrasonictechnology.com.

EX-CC6



Power Handling: 35-100
Mounting: Cam-Lock
Grille: White Aluminum
Frequency: 52 Hz - 22,000 Hz
Dimensions: 20 1/4" L x 9" H x 4" DPT
Install Dimensions: 18 3/4" L x 7 3/8" H
Cone Type and Size: (2) 6 1/2" Yellow Fiberglass Cone with a Rubber Surround
Crossover: Hi-End 12 dB, Adjustable for Tweeter & Woofer Level \pm 3 dB
Tweeter: 1" Titanium Dome Swivel
Efficiency: 88 db
Impedance: 8 Ω nominal, 6 Ω minimum
Speaker Bracket: N/A
Warranty: Intrasonic 10 Year

The JA Audio Difference

The sound quality from our products is continually tested against the competition, and we beat them every time. To keep this edge, we observe every stage of production in painstaking detail. From superior materials, design flexibility, reliability and efficiency to quality sound reproduction, we make no compromises. Moreover, we're experts in the delivery of aesthetically pleasing products at a reasonable price. We understand what customers need from a manufacturer like JA Audio, and we make those needs our prime directive. **Don't settle for less, choose JA Audio.**

The JA Audio Warranty

JA Audio will repair or replace any defect in material or workmanship which occurs during normal use of every product with new or rebuilt part, free of charge in the USA, ceiling, in-wall speakers and outdoor speakers 10 (ten) years and 2 (two) years for subwoofers from the date of original purchase. This warranty does not cover damages in shipment, failures caused by other products not supplied by JA Audio, or failures due to accident, misuse, or alteration of the equipment. This warranty is extended only to the original purchaser, and a purchase receipt invoice or other proof of original purchase date will be required before warranty repairs are provided.

About Intrasonic Technology

Intrasonic Technology, headquartered in Dallas, TX, manufactures full-featured, easy-to-use music distribution and intercom systems that offer great value for the price. Our diverse line of products includes Music Distribution and Intercom Systems, Video Door Intercom Systems, and a wide variety of ceiling, in-wall, or mini-cube audio speakers, and associated accessories. Product names and model numbers referenced or depicted on this brochure are trademarks or registered trademarks of Intrasonic Technology, Inc.

JA-C6All



Power Handling: 10-100
Mounting: Cam-Lock
Grille: White Aluminum
Frequency: 50 Hz - 22,000 Hz
Overall Dimensions: 9 1/2" DIA x 3 1/8" DPT
Install Dimensions: 8" DIA
Cone Type and Size: 6 1/2" Aluminum Cone Woofer with a Rubber Surround
Crossover: 18 dB High - Low pass Adjustable Crossover: Tweeter 0/-3 dB
Tweeter: 3/4" Aluminum Dome with Ferrofluid Cooled Voice Coil
Efficiency: 89 db
Impedance: 8 Ω nominal
Speaker Bracket: SPKBKT-6C
Warranty: Intrasonic 10 Year